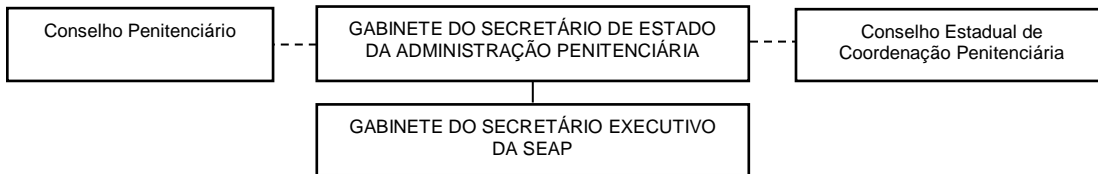
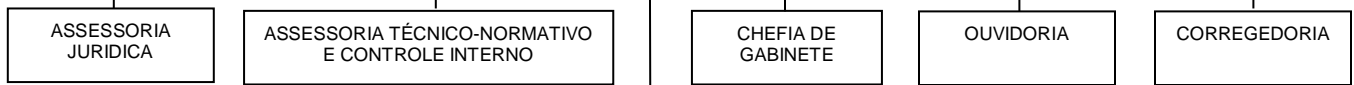


# ORGANOGRAMA DA SECRETARIA DE ESTADO DA CIDADANIA E ADMINISTRAÇÃO PENITENCIÁRIA - SEAP

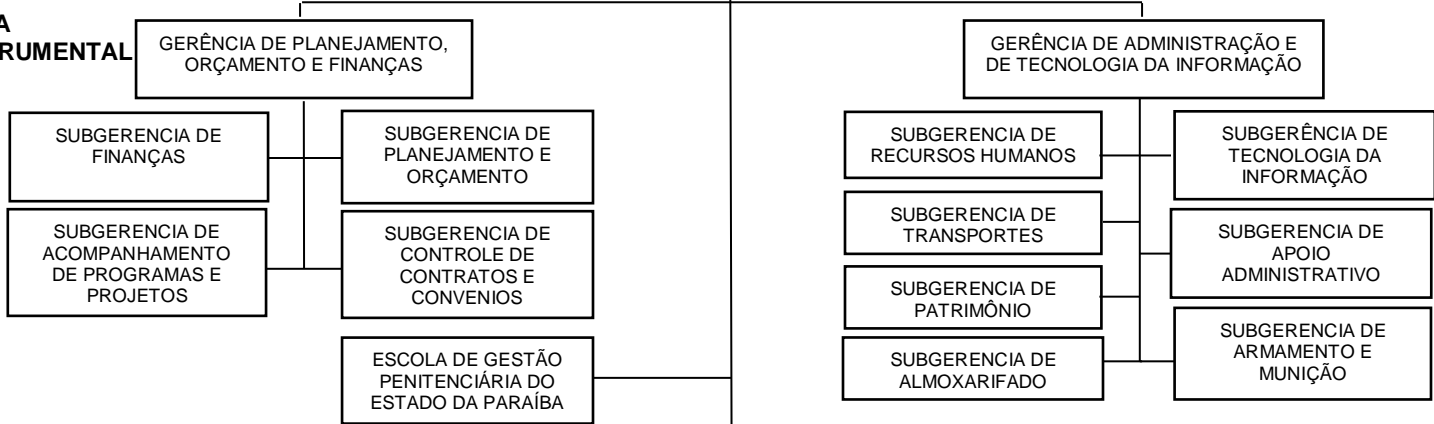
## DIREÇÃO SUPERIOR



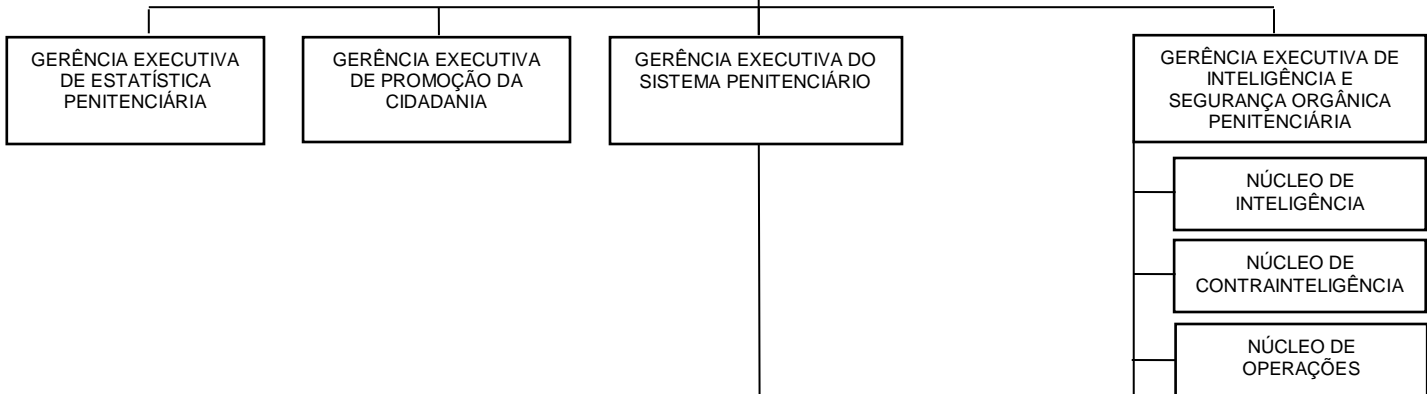
## ASSESSORAMENTO



## ÁREA INSTRUMENTAL



## ÁREA FINALÍSTICA



## UNIDADES LOCAIS E REGIONAIS

